



**DTM  
DTM 3V**

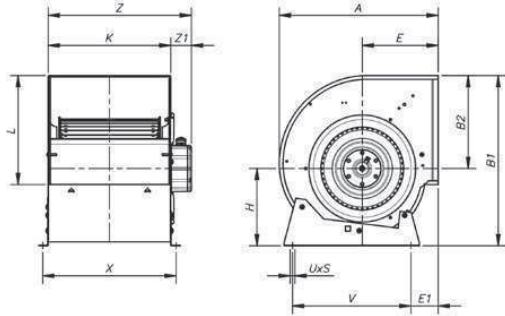


**DTM-B**

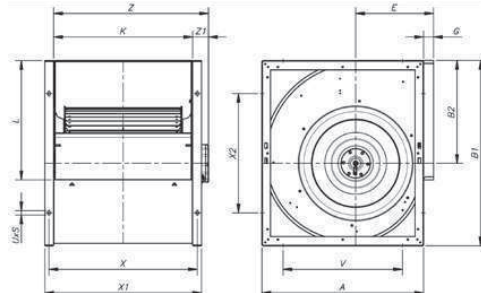


# Размери

DTM- 7/7...12/12

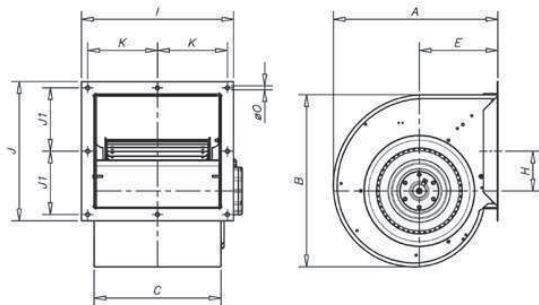


DTM- 15/15

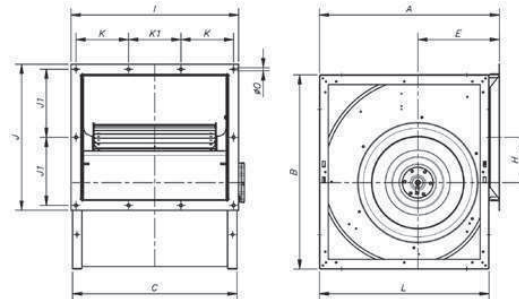


	A	B1	B2	E	E1	G	H	K	L	UxS	V	X	x1	x2	Z1	Z
DTM-7/7	315	333	189	152	64	-	144	230	208	9x13	225	258	-	-	70	300
DTM-9/7	380	400	218	183	78	-	182	249	263	9x13	275	277	-	-	106	355
DTM-9/9	380	400	218	183	78	-	182	300	263	9x13	275	328	-	-	57	357
DTM-10/8	422	450	246	202	73	-	204	274	292	9x13	315	300	-	-	83	357
DTM-10/10	422	450	246	202	73	-	204	326	292	9x13	315	352	-	-	45	371
DTM-12/9	493	526	290	230	82	-	236	309	345	18x9	390	387	-	-	105	414
DTM-12/12	493	526	290	230	82	-	236	387	345	18x9	390	415	-	-	70	457
DTM-15/15	553	632	352	265	-	30	-	473	408	18x9	406	505	533	406	60	533

DTM-B- 7/7...12/12



DTM-B- 15/15



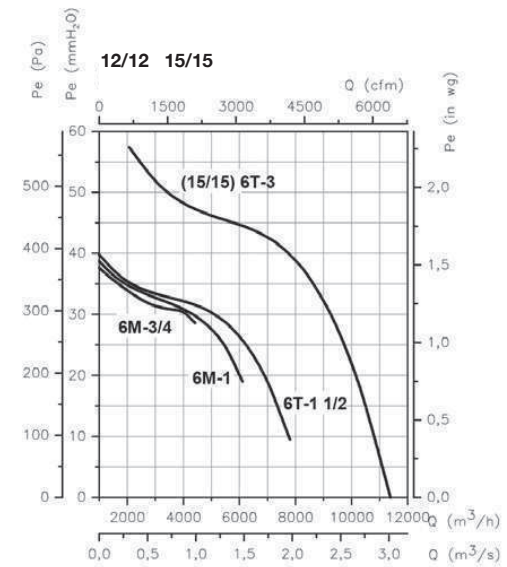
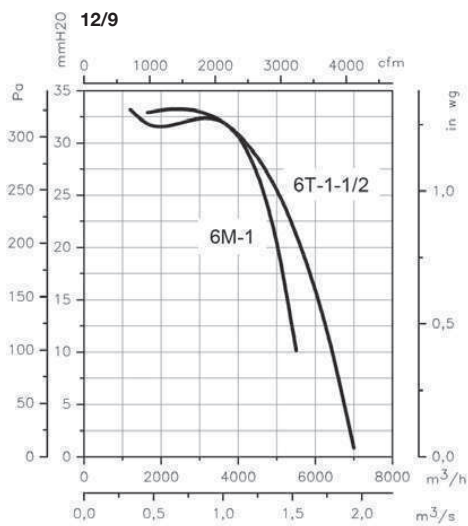
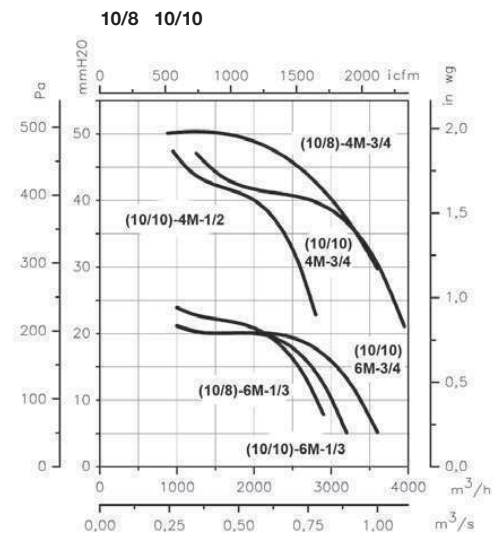
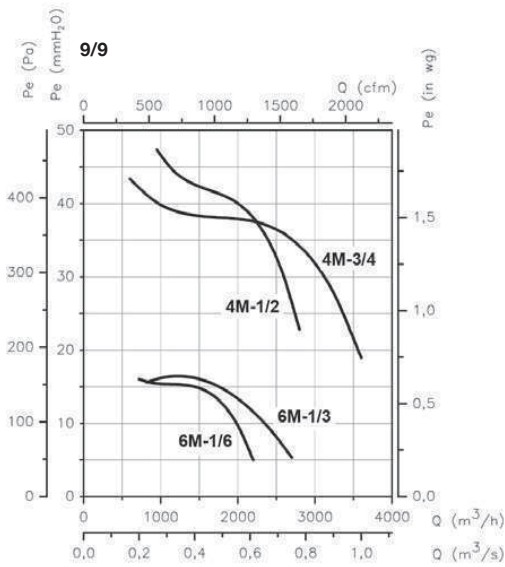
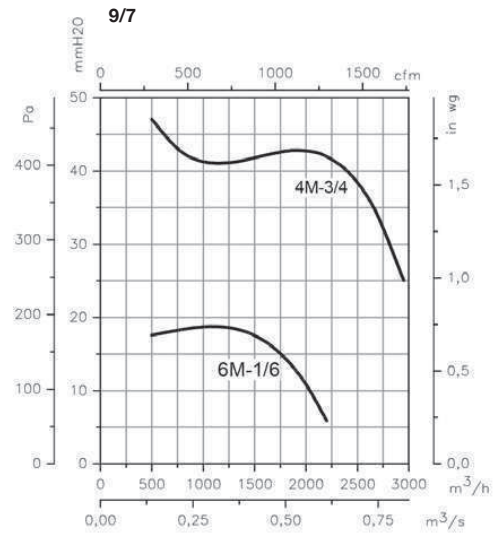
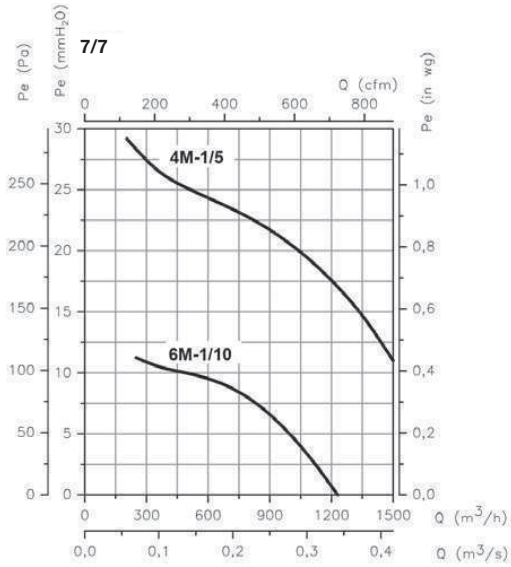
	A	B	C	E	H	I	J	J1	K	K1	L	øO
DTM-B-7/7	315	322	230	152	86,5	295	273	120,5	131,5	-	-	10
DTM-B-9/7	380	393	250	183	89	295	328	148	131,5	-	-	10
DTM-B-9/9	380	393	300	183	89	365	328	148	166,5	-	-	10
DTM-B-10/8	422	442	274	202	102	325	357	162,5	146,5	-	-	10
DTM-B-10/10	422	442	326	202	102	391	357	162,5	179,5	-	-	10
DTM-B-12/9	493	527	309	230	121	365	410	189	166,5	-	-	10
DTM-B-12/12	493	527	387	230	121	452	410	189	210	-	-	10
DTM-B-15/15	583	635	533	265	147	538	469	218,5	169	168	553	10

**Характеристики:**

**Q** = въздушен поток в m<sup>3</sup> /h, M<sup>3</sup> /s и CFM.

**PE** = статично налягане в mmH<sub>2</sub>O, PA и в работна група.

DTM  
DTM-B

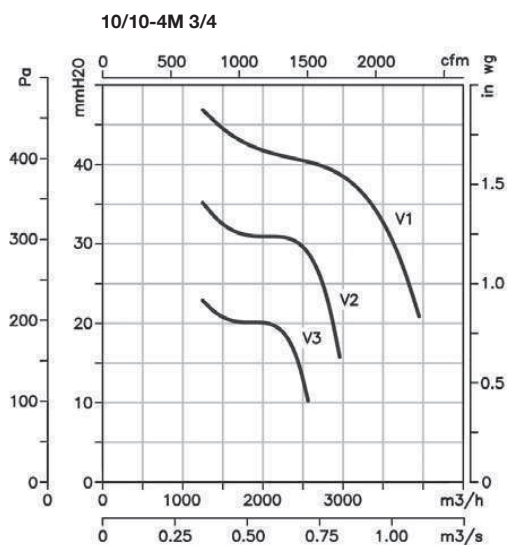
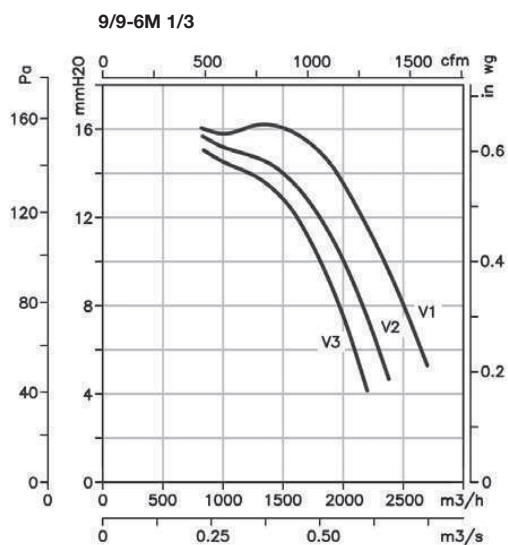
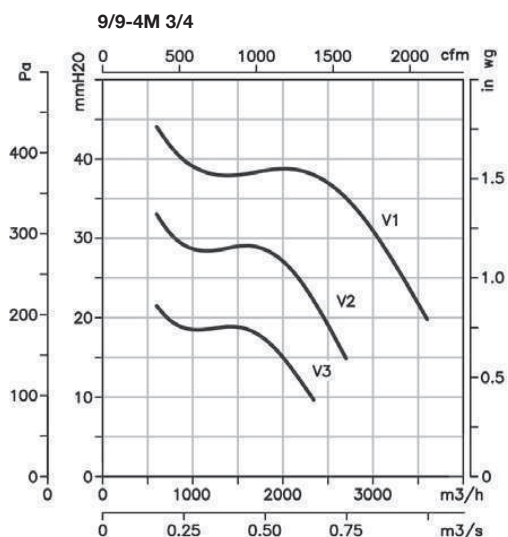
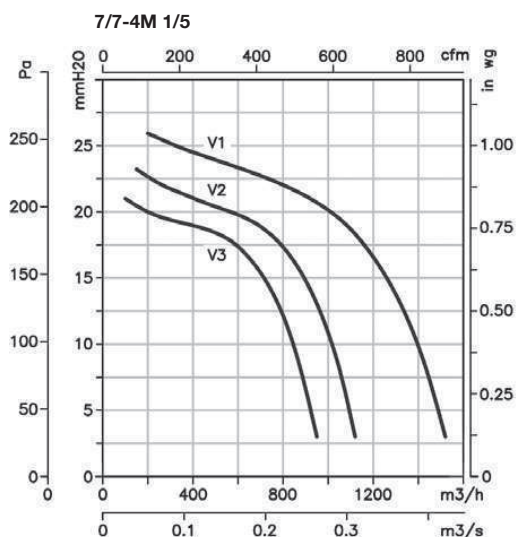


Характеристики:

Q = въздушен поток в m<sup>3</sup> /h, M<sup>3</sup> /s и CFM.

PE = статично налягане в mmH<sub>2</sub>O, PA и в работна група.:

DTM 3V

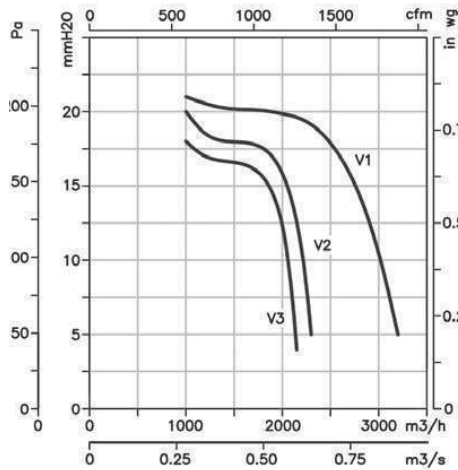


Характеристики:

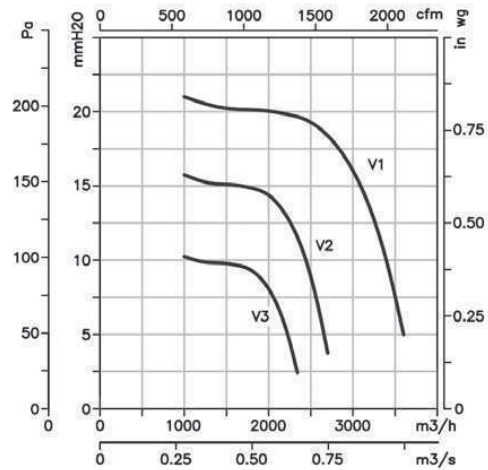
Q = въздушен поток в м<sup>3</sup> /h, М<sup>3</sup> /s и CFM.

PE = статично налягане в mmH<sub>2</sub>O, PA и в работна група.

10/10-6M 1/3



10/10-6M 3/4



12/12-6M 1

